

**Jetzt
zuschlagen und
Geld sparen**

Investitionsförderung für Gebrauchte Landtechnik

Das Lagerhaus Technik-Center unterstützt unsere Landwirte in herausfordernden Zeiten mit tollen Förderaktionen.

Aktionszeitraum: 11. Oktober bis 30. November



Fördervoraussetzung:

- gebrauchte ausgewählte Landtechnik
- Zeitraum der Förderung:
Freitag 11.10.24 – Samstag 30.11.24
- Zahlung vor Abholung, Abholung bis 30.11. möglich
- Finanzierung für ausgewählte Maschinen möglich
- wie besichtigt und Probe gefahren
- die Förderung wird direkt beim Kaufpreis abgezogen

Fördergegenstand:

- Traktoren: 20 %
- Teleskoplader: 20 %
- Bodenbearbeitung: 25 %
- Grünlandmaschinen: 25 %
- Düngung/Transport/Forst: 30 %



L4575265 **- 20%**

John Deere - 8R 370, 2021, 370/273 PS/kW, 3300h, A, K, EHR, DLB, FH, gVA, KL, **EUR 184.900,- exkl. 20 % MwSt.** (statt 231.125,-), Fiebiger Jakob, +43664 6273322, (ID 68386374)



L4575330 **- 20%**

John Deere - 7310 R, 2018, 310/228 PS/kW, 1810h, A, K, EHR, KRG, DLB, FH, gVA, KL, **EUR 152.900,- exkl. 20 % MwSt.** (statt 191.125,-), Bauer Markus, +43664 78094496, (ID 68379130)



L4575266 **- 20%**

John Deere - 6215R, 2015, 215/159 PS/kW, 2700h, A, K, EHR, KRG, DLB, FH, FZW, gVA, KL, **EUR 112.900,- exkl. 20 % MwSt.** (statt 141.125,-), Fiebiger Jakob, +43664 6273322, (ID 68381952)



L4575298 **- 20%**

John Deere - 6215 R, 2015, 215/159 PS/kW, 6458h, A, K, EHR, DLB, FH, gVA, KL, **EUR 77.900,- exkl. 20 % MwSt.** (statt 97.375,-), Dörfler Werner, +43 664 501 50 39, (ID G 68373331 - 2231634)



L4575212 **- 20%**

John Deere - 6170R, 2013, 170/125 PS/kW, 3780h, A, K, EHR, KRG, DLB, FH, FZW, gVA, KL, **EUR 82.900,- exkl. 20 % MwSt.** (statt 103.625,-), Sudy Franz, +43664 1308649, (ID G/68381352 / KE57013)



L4575213 **- 20%**

John Deere - 6170R, 2012, 170/125 PS/kW, 10500h, A, K, EHR, DLB, FH, FZW, gVA, KL, **EUR 52.900,- exkl. 20 % MwSt.** (statt 66.125,-), Sudy Franz, +43664 1308649, (ID G/68383976 - S155860)



L4575268 **- 20%**

John Deere - 6130R, 2018, 130/96 PS/kW, 2030h, A, K, EHR, DLB, FH, FZW, gVA, KL, **EUR 97.900,- exkl. 20 % MwSt.** (statt 122.375,-), Fiebiger Jakob, +43664 6273322, (ID 68386333)



L4575331 **- 20%**

John Deere - 6140M, 2021, 140/103 PS/kW, 1720h, A, K, EHR, DLB, FH, gVA, KL, **EUR 71.900,- exkl. 20 % MwSt.** (statt 89.875,-), Bauer Markus, +43664 78094496, (ID 68382339)



L4575235 **- 20%**

John Deere - 6115R, 2013, 115/85 PS/kW, 6700h, A, K, EHR, KRG, DLB, FH, FZW, gVA, KL, **EUR 51.900,- exkl. 20 % MwSt.** (statt 64.875,-), Barat Tibor, +43664 88839569, (ID V 68383321)



L4575333 **- 20%**

John Deere - 5115R, 2018, 115/85 PS/kW, 2466h, A, LS, K, EHR, KRG, DLB, FH, gVA, KL, **EUR 57.900,- exkl. 20 % MwSt.** (statt 72.375,-), Bauer Markus, +43664 78094496, (ID 68382207)



L4575215 **- 20%**

John Deere - 5100R, 2018, 110/81 PS/kW, 1088h, **EUR 49.990,- exkl. 20 % MwSt.** (statt 62.488,-), Sudy Franz, +43664 1308649, (ID 68377247)



L4575299 **- 20%**

John Deere - 6220 Premium, 2003, 90/67 PS/kW, 11200h, A, K, EHR, DLB, FH, KL, **EUR 23.900,- exkl. 20 % MwSt.** (statt 29.875,-), Dörfler Werner, +43664 5015039, (ID 68383338)



L4575343 **- 20%**

Case IH - Magnum 290, 2012, 290/214 PS/kW, 4568h, A, K, EHR, DLB, FH, gVA, KL, **EUR 68.900,- exkl. 20 % MwSt.** (statt 86.125,-), Sudy Franz, +43664 1308649, (ID G 68385619)



L4575301 **- 20%**

Case IH - Puma 165, 2020, 165/122 PS/kW, 800h, A, LS, K, EHR, DLB, FH, gVA, KL, **EUR 72.900,- exkl. 20 % MwSt.** (statt 91.125,-), Dörfler Werner, +43 664 501 50 39, (ID G 68375552 - 229868/)



L4575304 **- 20%**

Valtra - T254 Versu, 2018, 269/198 PS/kW, 3076h, A, LS, K, EHR, DLB, FH, gVA, KL, **EUR 87.900,- exkl. 20 % MwSt.** (statt 109.875,-), Dörfler Werner, +43664 5015039, (ID V 68375424)



L4575217 **- 20%**

Deutz Fahr - Agrottron TTV 6165, 2017, 163/120 PS/kW, 2812h, A, K, EHR, DLB, FH, FZW, gVA, KL, **EUR 66.900,- exkl. 20 % MwSt.** (statt 83.625,-), Sudy Franz, +43664 1308649, (ID G/68377100)



L4575306 **- 20%**

Steyr - 6180 CVT, 2011, 180/133 PS/kW, 5930h, A, K, EHR, KRG, DLB, FH, FZW, gVA, KL, **EUR 56.900,- exkl. 20 % MwSt.** (statt 71.125,-), Dörfler Werner, +43664 5015039, (ID V 68371653 - 159837/)



L4575308 **- 20%**

Steyr - 4115 MULTI, 2014, 115/85 PS/kW, 4900h, A, K, EHR, DLB, FH, KL, **EUR 43.900,- exkl. 20 % MwSt.** (statt 54.875,-), Dörfler Werner, +43664 5015039, (ID 68382189)



L4575218 **- 20%**

Lindner - Geo 73 mit Hauer FL, 2007, 73/54 PS/kW, 7886h, A, K, FH, FL, **EUR 29.900,- exkl. 20 % MwSt.** (statt 37.375,-), Sudy Franz, +43664 1308649, (ID V/68383045)



L4575312 **- 20%**

Massey Ferguson - 4355, 2002, 102/75 PS/kW, 6400h, A, K, DLB, FL, KL, **EUR 22.990,- exkl. 20 % MwSt.** (statt 28.738,-), Dörfler Werner, +43664 5015039, (ID G 68382875 - 234001)



L4576924 - 20%

Manitou - MT1335, 2023, 100/74 PS/kW, 8h, 4RAD, **EUR 85.900,- exkl. 20 % MwSt. (statt 107.375,-)**, Waxenegger Franz, +43664 8124254, (ID 123007)



L4576939 - 20%

Manitou - MLT 1040-145PS, 2021, 145/107 PS/kW, 4500h, WVhy, KL, **EUR 72.900,- exkl. 20 % MwSt. (statt 91.125,-)**, Sudy Franz, +43664 1308649, (ID 68371400)



L4576923 - 20%

Manitou - Teleskopklader MLT850-145 V+ Elite, 2024, 141/104 PS/kW, 1h, WVhy, KL, **EUR 124.900,- exkl. 20 % MwSt. (statt 156.125,-)**, Waxenegger Franz, +43664 8124254, (ID 129585)



L4576922 - 20%

Manitou - Teleskopklader MLT 737 Classic, 2023, 129/95 PS/kW, 1h, 4RAD, WVhy, **EUR 89.900,- exkl. 20 % MwSt. (statt 112.375,-)**, Waxenegger Franz, +43664 8124254, (ID 116219)



L4576937 - 20%

Manitou - MLT625, 2024, 75/56 PS/kW, 7h, WVhy, KL, **EUR 72.900,- exkl. 20 % MwSt. (statt 91.125,-)**, Waxenegger Franz, +43664 8124254, (ID 135347)



L4576934 - 20%

Manitou - MT 625 H, 2023, 75/56 PS/kW, 25h, WVhy, **EUR 56.900,- exkl. 20 % MwSt. (statt 71.125,-)**, Waxenegger Franz, +43664 8124254, (ID 123170)



L4576921 - 20%

Manitou - Teleskopklader ULM 412, 2023, 36/27 PS/kW, 7h, WVhy, **EUR 41.990,- exkl. 20 % MwSt. (statt 52.487,-)**, Waxenegger Franz, +43664 8124254, (ID 105315)



L4576920 - 20%

Manitou - Teleskopklader ULM 412, 2023, 36/27 PS/kW, 150h, WVhy, **EUR 39.900,- exkl. 20 % MwSt. (statt 49.875,-)**, Waxenegger Franz, +43664 8124254, (ID 105408)



L4576919 - 20%

Manitou - MLA533 Teleradlader, 2023, 1/1 PS/kW, 7h, **EUR 109.900,- exkl. 20 % MwSt. (statt 137.375,-)**, Waxenegger Franz, +43664 8124254, (ID 109295)



L4576918 - 20%

Manitou - MLA5-60, 2023, 1/1 PS/kW, 15h, **EUR 46.900,- exkl. 20 % MwSt. (statt 58.625,-)**, Waxenegger Franz, +43664 8124254, (ID 100157)



L4576931 - 20%

Manitou - MLA 5-50 H, 2023, 1/1 PS/kW, 69600h, **EUR 44.900,- exkl. 20 % MwSt. (statt 56.125,-)**, Waxenegger Franz, +43664 8124254, (ID 890965)



L4576930 - 20%

Manitou - MLA 5-60 H-Z, 2021, 1/1 PS/kW, 74h, **EUR 44.900,- exkl. 20 % MwSt. (statt 56.125,-)**, Fiebiger Jakob, +43664 6273322, (ID 68379125)



L4576929 - 20%

Manitou - MLA 4-50, 2021, 1/1 PS/kW, 1h, **EUR 41.900,- exkl. 20 % MwSt. (statt 52.375,-)**, Waxenegger Franz, +43664 8124254, (ID 890942)



L4576928 - 20%

Manitou - MLA 3-25 H, 2023, 1/1 PS/kW, 56880h, **EUR 37.900,- exkl. 20 % MwSt. (statt 47.375,-)**, Waxenegger Franz, +43664 8124254, (ID 891039)



L4576927 - 20%

Manitou - MLA 2-25 H, 2023, 1/1 PS/kW, 10h, **EUR 32.900,- exkl. 20 % MwSt. (statt 41.125,-)**, Waxenegger Franz, +43664 8124254, (ID 890820)



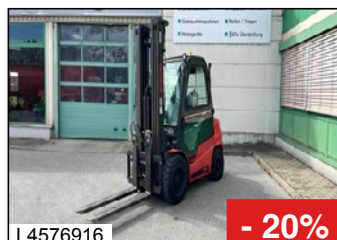
L4552765 - 20%

Manitou - MI 35 D, 2022, 1/1 PS/kW, 1000h, **EUR 36.100,- exkl. 20 % MwSt. (statt 45.125,-)**, Waxenegger Franz, +43664 8124254, (ID 888974)



L4552690 - 20%

Manitou - MI 25 D, 2023, 1/1 PS/kW, 50h, **EUR 27.900,- exkl. 20 % MwSt. (statt 34.875,-)**, Waxenegger Franz, +43664 8124254, (ID 888788)



L4576916 - 20%

Manitou - MI35D, 2022, 1/1 PS/kW, 979h, **EUR 27.900,- exkl. 20 % MwSt. (statt 34.875,-)**, Waxenegger Franz, +43664 8124254, (ID 885398)



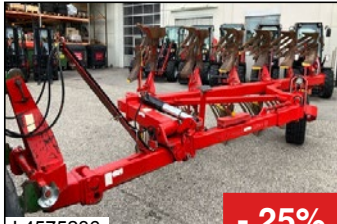
L4576933 - 20%

Manitou - MI 30D ST5, 2023, 1/1 PS/kW, 200h, **EUR 25.900,- exkl. 20 % MwSt. (statt 32.375,-)**, Waxenegger Franz, +43664 8124254, (ID 897472)



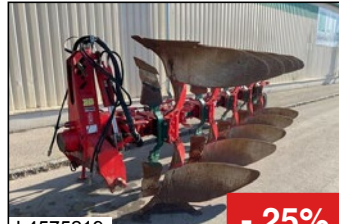
L4576917 - 20%

Manitou - MI25D, 2022, 1/1 PS/kW, 15h, **EUR 20.900,- exkl. 20 % MwSt. (statt 26.125,-)**, Waxenegger Franz, +43664 8124254, (ID 888767)



L4575236 **- 25%**

Pöttinger - Servo 65, 1998, **EUR 6.900,- exkl. 20 % MwSt.** (statt 9.200,-), Barat Tibor, +43664 88839569, (ID 68382843)



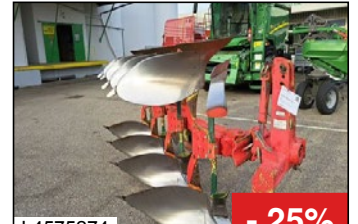
L4575219 **- 25%**

Vogel&Noot - Plus XS 1050 Vario 5-sch., 2008, **EUR 10.900,- exkl. 20 % MwSt.** (statt 14.533,-), Sudy Franz, +43664 1308649, (ID V/68374582)



L4575237 **- 25%**

Vogel&Noot - Euromat S950, 1901, **EUR 5.900,- exkl. 20 % MwSt.** (statt 7.867,-), Barat Tibor, +43664 88839569, (ID 68381825)



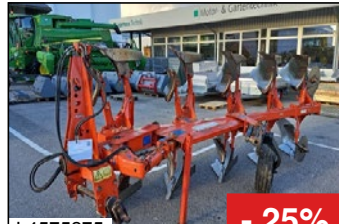
L4575274 **- 25%**

Vogel&Noot - 4 Schar Pflug, 1997, **EUR 5.990,- exkl. 20 % MwSt.** (statt 7.987,-), Andreas Obermair, +43 664 8124249, (ID 68377866)



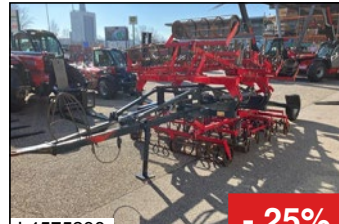
L4575313 **- 25%**

Agro-Masz - P05, 2013, **EUR 12.900,- exkl. 20 % MwSt.** (statt 17.200,-), Dörfner Werner, +43664 5015039, (ID 68379025)



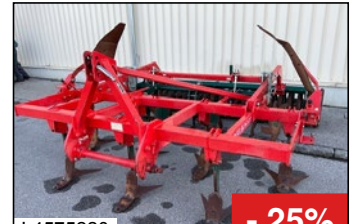
L4575275 **- 25%**

Kühne - Multi-Master 121, 2006, **EUR 5.990,- exkl. 20 % MwSt.** (statt 7.987,-), Andreas Obermair, +43 664 8124249, (ID 68377657)



L4575238 **- 25%**

Kongskilde - SP 4000, 2016, **EUR 6.900,- exkl. 20 % MwSt.** (statt 9.200,-), Barat Tibor, +43664 88839569, (ID 68370333)



L4575220 **- 25%**

Vogel&Noot - TerraMix, 2005, FLG, STS, **EUR 4.490,- exkl. 20 % MwSt.** (statt 5.987,-), Sudy Franz, +43664 1308649, (ID V/68381870)



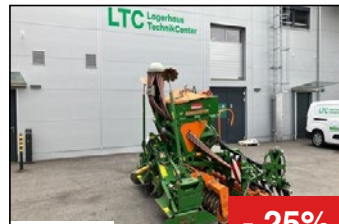
L4575276 **- 25%**

Lemken - Solitair 9 300-DS 125 Zirkon 8 300, 2016, **EUR 24.900,- exkl. 20 % MwSt.** (statt 33.200,-), Fiebigler Jakob, +43664 6273322, (ID 68379112)



L4575345 **- 25%**

Lemken - Solitär 8/400 DS, 2012, **EUR 22.900,- exkl. 20 % MwSt.** (statt 30.533,-), Sudy Franz, +43664 1308649, (ID 68381318)



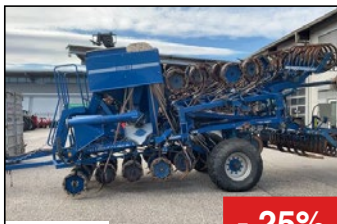
L4575277 **- 25%**

Amazone - Ad-P 303 Special+ KE 303, 2006, **EUR 13.900,- exkl. 20 % MwSt.** (statt 18.533,-), Andreas Obermair, +43 664 8124249, (ID 68379113)



L4575239 **- 25%**

Kuhn - Megant 600, 2018, **EUR 24.900,- exkl. 20 % MwSt.** (statt 33.200,-), Barat Tibor, +43664 88839569, (ID 68382341)



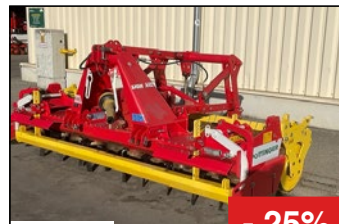
L4575240 **- 25%**

Kockerling - Ultima 600, 2007, BEL, **EUR 21.900,- exkl. 20 % MwSt.** (statt 29.200,-), Barat Tibor, +43664 88839569, (ID 68380954)



L4575241 **- 25%**

Kuhn - Planter 3R, 2014, **EUR 26.990,- exkl. 20 % MwSt.** (statt 35.987,-), Barat Tibor, +43664 88839569, (ID 68383297)



L4575221 **- 25%**

Pöttinger - Lion 3002, 2013, KR, BEL, **EUR 11.900,- exkl. 20 % MwSt.** (statt 15.867,-), Sudy Franz, +43664 1308649, (ID 68380204)



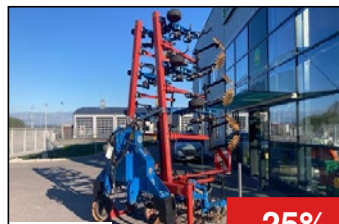
L4575222 **- 25%**

Maschio - 6m, 2009, KR, BEL, **EUR 11.900,- exkl. 20 % MwSt.** (statt 15.867,-), Sudy Franz, +43664 1308649, (ID 68382263)



L4575279 **- 25%**

Einböck - Hackgerät CHOPSTAR 5-90 EMS 6 Reihig + ROW-GUARD, 2015, **EUR 23.900,- exkl. 20 % MwSt.** (statt 31.867,-), Andreas Obermair, +43 664 8124249, (ID 68383038)



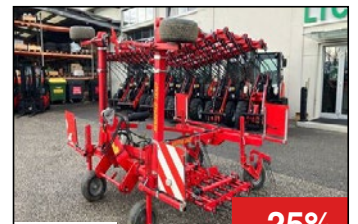
L4575335 **- 25%**

Hatzenbichler - Hackgerät 9r, 2016, **EUR 22.900,- exkl. 20 % MwSt.** (statt 30.533,-), Bauer Markus, +43664 78094496, (ID 68378546)



L4575244 **- 25%**

Einböck - Aerostar-Fusion 600, 2022, **EUR 11.900,- exkl. 20 % MwSt.** (statt 15.867,-), Barat Tibor, +43664 88839569, (ID 68382674)



L4575246 **- 25%**

Einböck - Aerostar Exact 600, 2013, **EUR 5.490,- exkl. 20 % MwSt.** (statt 7.320,-), Barat Tibor, +43664 88839569, (ID 68381077)



L4575249 **- 25%**

John Deere - 578, 2005, NB, **EUR 11.900,- exkl. 20 % MwSt. (statt 15.867,-)**, Barat Tibor, +43664 88839569, (ID 68383348)



L4575281 **- 25%**

Krone - Fortima V 1500 MC, 2010, NB, RNH, **EUR 19.900,- exkl. 20 % MwSt. (statt 26.533,-)**, Andreas Obermair, +43 664 8124249, (ID 68382697)



L4575226 **- 25%**

New Holland - BR 7070, 2010, NB, RNH, **EUR 7.900,- exkl. 20 % MwSt. (statt 10.533,-)**, Sudy Franz, +43664 1308649, (ID G/68381850 / GR7677)



L3821956 **- 25%**

Claas - Rollant 62, 1990, **EUR 2.890,- exkl. 20 % MwSt. (statt 3.853,-)**, Sudy Franz, +43664 1308649, (ID G/68376063)



L4575250 **- 25%**

Claas - CARGOS 8400, 2016, DOW, KD, **EUR 58.900,- exkl. 20 % MwSt. (statt 78.533,-)**, Barat Tibor, +43664 88839569, (ID 68380693)



L4575283 **- 25%**

Pöttinger - Euroboss 370H, 2011, ZSM, **EUR 18.900,- exkl. 20 % MwSt. (statt 25.200,-)**, Fiebiger Jakob, +43664 6273322, (ID 68381617)



L4575228 **- 25%**

Tanco - Autowrap 1300 SM, 2000, **EUR 9.990,- exkl. 20 % MwSt. (statt 13.320,-)**, Sudy Franz, +43664 1308649, (ID 68374093)



L4575252 **- 25%**

Berti - Mulcher, 1901, **EUR 8.900,- exkl. 20 % MwSt. (statt 11.867,-)**, Barat Tibor, +43664 88839569, (ID 68382519)



L4575284 **- 25%**

Pöttinger - Eurocat 311 Alphamotion Plus, 2012, TR, SHV, **EUR 5.900,- exkl. 20 % MwSt. (statt 7.867,-)**, Fiebiger Jakob, +43664 6273322, (ID V 68383181)



L4575285 **- 25%**

Pöttinger - Clasic 271, 2019, TR, SHV, **EUR 7.900,- exkl. 20 % MwSt. (statt 10.533,-)**, Andreas Obermair, +43 664 8124249, (ID 68383102)



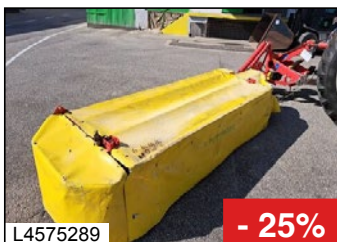
L4575287 **- 25%**

Pöttinger - Eurocat 276 F PL CL, 2009, TR, **EUR 3.490,- exkl. 20 % MwSt. (statt 4.653,-)**, Fiebiger Jakob, +43664 6273322, (ID 68377733)



L4575288 **- 25%**

Pöttinger - Novacat 306F ED, 2010, SHB, AFB, BEL, **EUR 3.900,- exkl. 20 % MwSt. (statt 5.200,-)**, Andreas Obermair, +43 664 8124249, (ID 68374010)



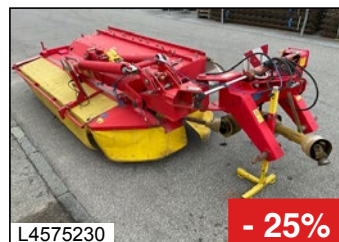
L4575289 **- 25%**

Pöttinger - Novadisc 400, 2012, SHB, **EUR 4.990,- exkl. 20 % MwSt. (statt 6.653,-)**, Andreas Obermair, +43 664 8124249, (ID 68378112)



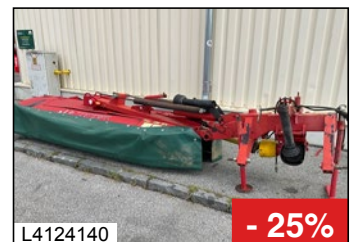
L4575290 **- 25%**

Pöttinger - Novacat 352, 2014, SHB, **EUR 5.490,- exkl. 20 % MwSt. (statt 7.320,-)**, Andreas Obermair, +43 664 8124249, (ID 68382269)



L4575230 **- 25%**

Pöttinger - NOVACAT 265 H-ED, 2009, SHB, AFB, **EUR 4.290,- exkl. 20 % MwSt. (statt 5.720,-)**, Sudy Franz, +43664 1308649, (ID V/68378699)



L4124140 **- 25%**

SIP - Laser 300 D, 2007, SHB, **EUR 3.190,- exkl. 20 % MwSt. (statt 4.253,-)**, Sudy Franz, +43664 1308649, (ID V/68377339)



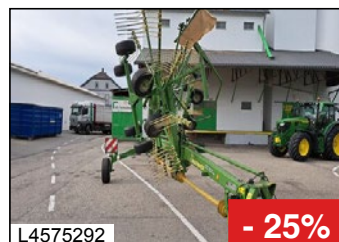
L4575291 **- 25%**

Pöttinger - Hit 610NZ, 2010, BEL, **EUR 5.900,- exkl. 20 % MwSt. (statt 7.867,-)**, Andreas Obermair, +43 664 8124249, (ID 68377038)



L4269242 **- 25%**

Pöttinger - Hit 69 A, 2000, **EUR 2.990,- exkl. 20 % MwSt. (statt 3.987,-)**, Andreas Obermair, +43 664 8124249, (ID 68380682)



L4575292 **- 25%**

Krone - Swadro 807, 2009, STN, BEL, TDA, **EUR 9.990,- exkl. 20 % MwSt. (statt 13.320,-)**, Andreas Obermair, +43 664 8124249, (ID 68378678)



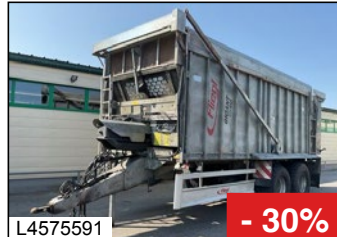
L4575340 **- 25%**

Kuhn - GA 7301, 2007, MIT, BEL, **EUR 4.900,- exkl. 20 % MwSt. (statt 6.533,-)**, Barat Tibor, +43664 88839569, (ID 68369664)



L4575612 -30%

Krampe - Big Body 640, 2022, BWVh, **EUR 31.900,- exkl. 20 % MwSt. (statt 45.571,-)**, Barat Tibor, +43664 88839569, (ID 68378649)



L4575591 -30%

Fiegl - Gigant 271 ASW, 2015, **EUR 31.900,- exkl. 20 % MwSt. (statt 45.571,-)**, Sudy Franz, +43664 1308649, (ID G/68380788 / HA39679)



L4127046 -30%

Kässbohrer - VKD 12, 1990, **EUR 3.190,- exkl. 20 % MwSt. (statt 4.557,-)**, Sudy Franz, +43664 1308649, (ID G/68376411)



L4127047 -30%

Kässbohrer - DKH 17, 1990, **EUR 3.590,- exkl. 20 % MwSt. (statt 5.129,-)**, Sudy Franz, +43664 1308649, (ID G/68376409)



L4575651 -30%

Kirchner - T4080, 2014, **EUR 13.900,- exkl. 20 % MwSt. (statt 19.857,-)**, Bauer Markus, +43664 78094496, (ID 68380859)



L4575592 -30%

Rauch - Axis 30.1 W, 2009, 1h, TEL, GSE, **EUR 6.900,- exkl. 20 % MwSt. (statt 9.857,-)**, Sudy Franz, +43664 1308649, (ID 68376286)



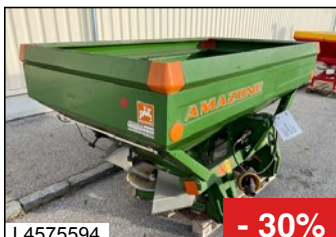
L4575613 -30%

Rauch - 20.2, 2007, 1h, TEL, GSE, **EUR 4.990,- exkl. 20 % MwSt. (statt 7.129,-)**, Barat Tibor, +43664 88839569, (ID 68379523)



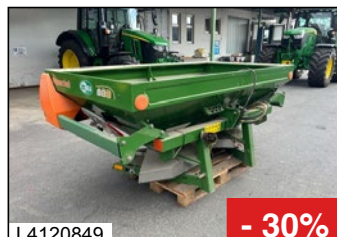
L4575593 -30%

Rauch - Axeo 18.1 Q, 2012, **EUR 3.590,- exkl. 20 % MwSt. (statt 5.129,-)**, Sudy Franz, +43664 1308649, (ID G/68377357)



L4575594 -30%

Amazone - ZAM MAXI S, 2002, 1h, TEL, GSE, **EUR 3.990,- exkl. 20 % MwSt. (statt 5.700,-)**, Sudy Franz, +43664 1308649, (ID 68376062)



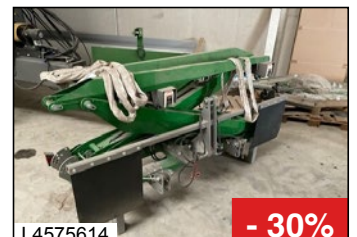
L4120849 -30%

Amazone - ZA-M, 2010, TEL, GSE, **EUR 3.190,- exkl. 20 % MwSt. (statt 4.557,-)**, Sudy Franz, +43664 1308649, (ID G/68378687)



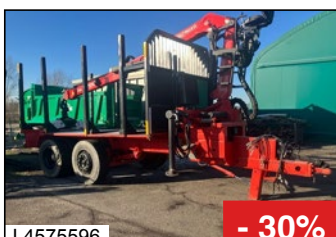
L4575595 -30%

Reichert - FDTK 25/26, 2000, 1h, Pneu, **EUR 2.490,- exkl. 20 % MwSt. (statt 3.557,-)**, Sudy Franz, +43664 1308649, (ID 68375105)



L4575614 -30%

Sonstige - Greenseeker Farm Facts, 2016, 1h, **EUR 9.900,- exkl. 20 % MwSt. (statt 14.143,-)**, Barat Tibor, +43664 88839569, (ID 68380266)



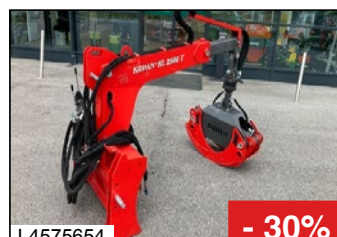
L4575596 -30%

Stepa - FZ8090 mit LKW-Unterbau, 2020, **EUR 23.900,- exkl. 20 % MwSt. (statt 34.143,-)**, Sudy Franz, +43664 1308649, (ID 68382966)



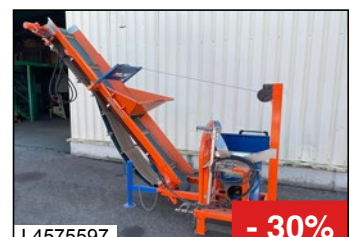
L4575659 -30%

Berger - Forstanhänger, 2003, **EUR 7.900,- exkl. 20 % MwSt. (statt 11.286,-)**, Sudy Franz, +43664 1308649, (ID V/68383121)



L4575654 -30%

Sonstige - Krpan KL 2500T, 2019, **EUR 3.590,- exkl. 20 % MwSt. (statt 5.129,-)**, Bauer Markus, +43664 78094496, (ID 68378447)



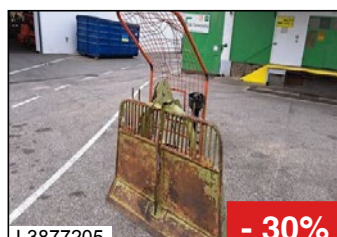
L4575597 -30%

Balfor - SC 700 CNT 5/400 PI, 2019, 2/2 PS/kW, **EUR 3.690,- exkl. 20 % MwSt. (statt 5.271,-)**, Sudy Franz, +43664 1308649, (ID G/68377721)



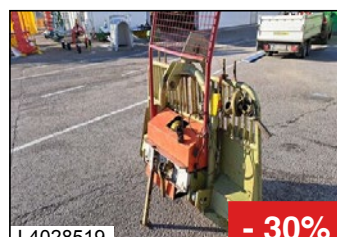
L4575598 -30%

Sonstige - FHM BX-62R Holzhäcksler, 2013, **EUR 2.290,- exkl. 20 % MwSt. (statt 3.271,-)**, Sudy Franz, +43664 1308649, (ID 68374845)



L3877205 -30%

Holz knecht - HS 306 SE, 2002, 1h, **EUR 1.590,- exkl. 20 % MwSt. (statt 2.271,-)**, Andreas Obermair, +43 664 8124249, (ID 68375061)



L4028519 -30%

Holz knecht - Selwinde SE306, 2001, **EUR 2.990,- exkl. 20 % MwSt. (statt 3.700,-)**, Andreas Obermair, +43 664 8124249, (ID 68383031)



L4039110 -30%

Igler - 55, 2006, **EUR 3.390,- exkl. 20 % MwSt. (statt 4.843,-)**, Sudy Franz, +43664 1308649, (ID 68379301)